

WARNING: Warning devices are strictly regulated and governed by Federal, State and Municipal ordinances. These devices shall be used **ONLY** on approved vehicles. It is the sole responsibility of the user of these devices to ensure compliance.

MOUNTING INSTRUCTIONS

Important: DO NOT over tighten mounting screws or nuts. This could cause permanent damage to the bracket. Use appropriate hardware for mounting.

1. Locate flat mounting location for PREDATOR Surface Mount LEDs.
2. Using the gasket as a template, mark and drill pilot holes for mounting screws.

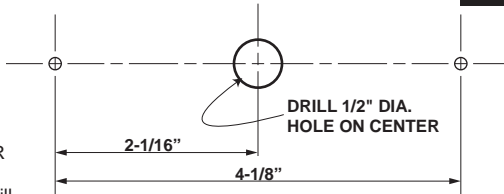
Note: The mounting holes will be slightly greater than 4-1/8" center to center. These dimensions are for approximate reference only.

3. Drill 1/2" hole at the center of the mounting hole pattern (see layout - do not scale).

Note: If possible, the back side of this hole should be deburred where drill breakthrough occurs.

4. Route cable through hole in gasket and make electrical connections (Red-power, Black-ground. White is for ID and pattern selection and will be taped after selection is made). If the final location of the cable will be inaccessible, ID and pattern selection must be made before final installation.
5. Install gasket over rear of light and loosely install unit with #8 self-threading screws and plastic washers. Washer must be installed under the head of the screw. Note: Gasket must be used to prevent oxidation and galvanization of the mounting surface if differing metals come in contact.
6. When final position of unit is obtained tighten screws. **DO NOT OVER-TIGHTEN!**

IMPORTANT: DO NOT connect this device to a strobe power supply.



OPERATING INSTRUCTIONS

See setup procedure on second page.

The single PREDATOR comes equipped with an internal flasher with 33 user selectable patterns that can be synchronized either alternating or simultaneous with up to three other lights. It can also be put into slave mode and driven through an external flasher.

1. Connect the PREDATOR BLACK wire to a good, convenient ground.
2. Connect the PREDATOR RED wire to one side of a user supplied on/off switch. Connect the other side of the switch, through a 5Amp fuse, to a source of +10-30Vdc.

ID SELECTION

1. Identify which pattern and sequence preferred and look up ID#s on the table provided on the second page.
2. Connect the PREDATOR WHITE wire to the same source as the RED wire (Note: you will need to disconnect after power is applied)
3. Turn PREDATOR ON
4. Without disconnecting power from unit, disconnect WHITE wire
5. Momentarily Touching and removing the WHITE wire to ground will advance the PREDATOR to the next ID#. The ID# can be identified by the number of sequential flashes from 1 up to 4. ID# 1 should be used if not synchronizing with other lights.
6. Once the ID is selected DISCONNECT power.

PREDATOR™

SINGLE SURFACE MOUNT WARNING SYSTEM

ASSEMBLY INSTRUCTIONS

EPRDSSMDBx

EPRDSSMDBx-EU



WARNING

This product contains high intensity LED devices. To prevent eye damage, **DO NOT** stare into light beam at close range.



PATTERN SELECTION

1. Disconnect WHITE wire from any connections if applicable.
2. Turn PREDATOR ON.
3. Momentarily touching and removing the WHITE wire(s) to ground will advance the PREDATOR to the next flash pattern. Touching and removing the White wire for more than a few seconds will allow you to change the PREDATOR to the previous pattern. See flash pattern table. Continuing to touch and remove the WHITE wire(s) to ground will allow you to scroll through the pattern list. After pattern #33 is reached the list will start over again at pattern #1.

NOTE: The PREDATOR is equipped with flash pattern memory. Once you have selected a pattern the PREDATOR will always activate to that pattern every time the unit is turned on. Tape up and secure WHITE wire so that it will not accidentally change your selected pattern.

PATTERN RESET

1. Remove power.
2. Place WHITE (sync) wire to ground.
3. With sync wire grounded, re-power RED wire.
4. Maintain for one second (light will dim).
5. Remove power and ground (pattern 1 set).

SLAVE MODE

The PREDATOR is capable of being activated through the use of a user supplied flasher by putting it in slave mode.

1. Permanently connect the PREDATOR WHITE and BLACK wire to a good, convenient ground.
2. Connect the PREDATOR RED wire, through a 5Amp fuse, to the output of a +10-30Vdc switching flasher.

NOTE: The PREDATOR is a factory sealed unit that **CANNOT** be serviced in the field. Any attempt to gain access to the PREDATOR unit will most likely cause permanent damage and void its warranty.

WIRE HOOK-UP TABLE (TOP LED MODULE)

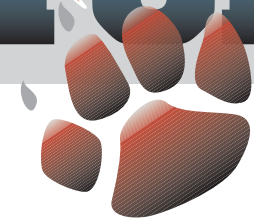
| Wire Color | Connect to: |
|------------|-------------------|
| Red | +10-30Vdc |
| Black | Ground (-) |
| White | ID/Pattern Select |



3900 Central Parkway
Hudsonville, MI 49426
toll free 800.338.7337
office 616.896.7100

techsupport@soundoffsignal.com
www.soundoffsignal.com

PREDATOR™



SINGLE SURFACE MOUNT WARNING SYSTEM

ASSEMBLY INSTRUCTIONS
EPRDSSMDBx
EPRDSSMDBx-EU

Predator Sync Configuration Instructions IMPORTANT! A MAXIMUM OF 4 SINGLE LIGHTS CAN BE SYNCED TOGETHER

1. Set ID#
 - a. Identify which pattern and sequence you want and look up ID# settings below.
 - b. Connections
 - i. RED: +12Vdc
 - ii. WHT: +12Vdc (Note: you will need to disconnect after power is applied)
 - iii. BLK: Ground
 - c. Apply power to unit
 - d. Without disconnecting power from unit, disconnect WHT wire
 - e. Momentarily connect WHT to Ground to change ID #
 - i. Identify ID# by number of sequential flashes
 - ii. Possible ID#s: 1 – 4
 - f. Disconnect power from unit to get out of ID mode.
2. Set Pattern
 - a. Reapply power to units.
 - b. Once all Light Head ID#s are configured, make sure all lights are flashing the same pattern
 - c. Connect corresponding colored wires of all units together: RED to RED, etc.
 - d. Change Pattern
 - i. Momentarily connect WHT wires to Ground
 - ii. Observe pattern change on all lights connected
 - e. Insulate all wires by taping with electrical tape
3. Connect Master Switch for Application
 - a. **IMPORTANT!** Ensure WHT Pattern/Sync Wires are tied together

1 LIGHT

Single Light Operation: Follow the ID Selection steps and set the PREDATOR II to ID#1 if it is not already.
NOTE: Steady Burn is produced for patterns 9 & 10 in Single Operation.

2 LIGHTS

ALTERNATING: To obtain Alternating patterns, follow the ID SELECTION steps and set one PREDATOR II to ID#1 and the other to ID#3. Then proceed to the PATTERN SELECTION steps.

SIMULTANEOUS: To obtain Simultaneous patterns, follow the ID SELECTION steps and set both PREDATOR II lights to ID#1. Then proceed to PATTERN SELECTION steps.

4 LIGHTS

X-Pattern: To obtain X-patterns, follow the ID SELECTION steps and set one of the four PREDATOR II lights to ID#1, one to ID#2, one to ID#3, and one to ID#4. Then proceed to PATTERN SELECTION steps. NOTE: Be sure to mount each PREDATOR II in the correct placement based on ID#.

TECHNICAL SPECIFICATIONS

| | |
|------------------------|------------------|
| Overall Dimensions: | 4.5"x2.36"x1.25" |
| Flash Patterns: | 33 |
| Input Voltage: | 10-30Vdc |
| Current Consumption: | 1.1 Amps* |
| Light Sync Technology: | Yes |
| Operating Temperature: | -40° to +65° C |

*Pattern Dependent

X-Pattern Sequence

ID#1 > ID#4 > ID#2 > ID#3

X-Pattern Light Head Placement

| | |
|------|------|
| ID#4 | ID#2 |
| ID#3 | ID#1 |

FLASH PATTERNS for SINGLE SURFACE MOUNT PREDATOR (fpm=flashes/minute)

| # | Pattern Name | 1 Light | Alternating 2 Lights | Simultaneous 2 Lights | X-Pattern 4 Lights | Flashes/ Minute |
|----|----------------------------|---------|-------------------------|--------------------------|-----------------------|--------------------|
| 1 | Quint | X | X | X | | 70 |
| 2 | Warp | X | X | X | | 350 |
| 3 | Inter-Cycle Flash | X | X | | | |
| 4 | Double Flash | X | X | X | | 70 |
| 5 | Quad Flash | X | X | X | | 80 |
| 6 | Power Pulse | X | X | X | | 180 |
| 7 | Road Runner | X | X | X | | 113 |
| 8 | Q-Switch | X | X | | | |
| 9 | Road Runner Steady Burn | X | X | | | 113 |
| 10 | Quad Steady Burn | X | X | | | 80 |
| 11 | E-Ideal Single Flash | X | X | X | | 200 |
| 12 | E-Ideal Double Flash | X | X | X | | 146 |
| 13 | Quad2 Flash | X | X | X | | 67 |
| 14 | Double2 Flash | X | X | X | | 95 |
| 15 | X-Warp | | | | X | |
| 16 | X-Double | | | | X | |
| 17 | PowerRunner | X | X | X | | |
| 18 | LCR Quint | X | X | X | | |
| 19 | Warp ³ | X | X | X | | |
| 20 | Ultra Warp | X | X | X | | 545 |
| 21 | Thunder and Lightning | X | X | | | |
| 22 | LiteSpeed | X | X | X | | 85 |
| 23 | SuperSonic | X | X | X | | 170 |
| 24 | LCR LiteSpeed | X | X | X | | |
| 25 | SuperSonic Ultra | X | X | X | | |
| 26 | TempoShift | X | X | X | | |
| 27 | TempoShift Warp | X | X | X | | |
| 28 | SBE2 | X | X | X | | 67 |
| 29 | C ² | X | X | X | | 200 |
| 30 | U ² | X | X | X | | 176 |
| 31 | UltraGlow | X | X | X | | |
| 32 | Cyclone | X | X | X | | |
| 33 | Chameleon | X | X | X | | |