



## microLOC enterprise Professional Fleet Management

microLOC enterprise is the latest addition to hermes' well-established and highly successful GPS tracking and Dispatcher system.

With the launch of microLOC, hermes is continuing a success story which is without parallel in the ICOM application segment: Since 1991, the Munich-based company has sold its in-house developed tracking and dispatch system in over 1,800 installations and more than 60 countries Worldwide.

Equipped with outstanding features such as Geo-Fencing, Email notification, sawdust trail playback, automatic Logging and the integration of various digital mapping platforms, microLOC is leading the standards in the ICOM application world.

Without the necessity to install cumbersome drivers, IDAS radios can be directly connected to microLOC without the need for additional software.



### Plug-and-Play

microLOC is not simply software. It is a reliable piece of hardware which is easy to access, configure and operate thru a built in web-server.



### Location Service

Real-Time GPS based Location Tracking for up to 250 subscribers with different mapping platforms for worldwide coverage.



### Text Messaging & Email

Web-based two-way text Messaging Service and Email notification.



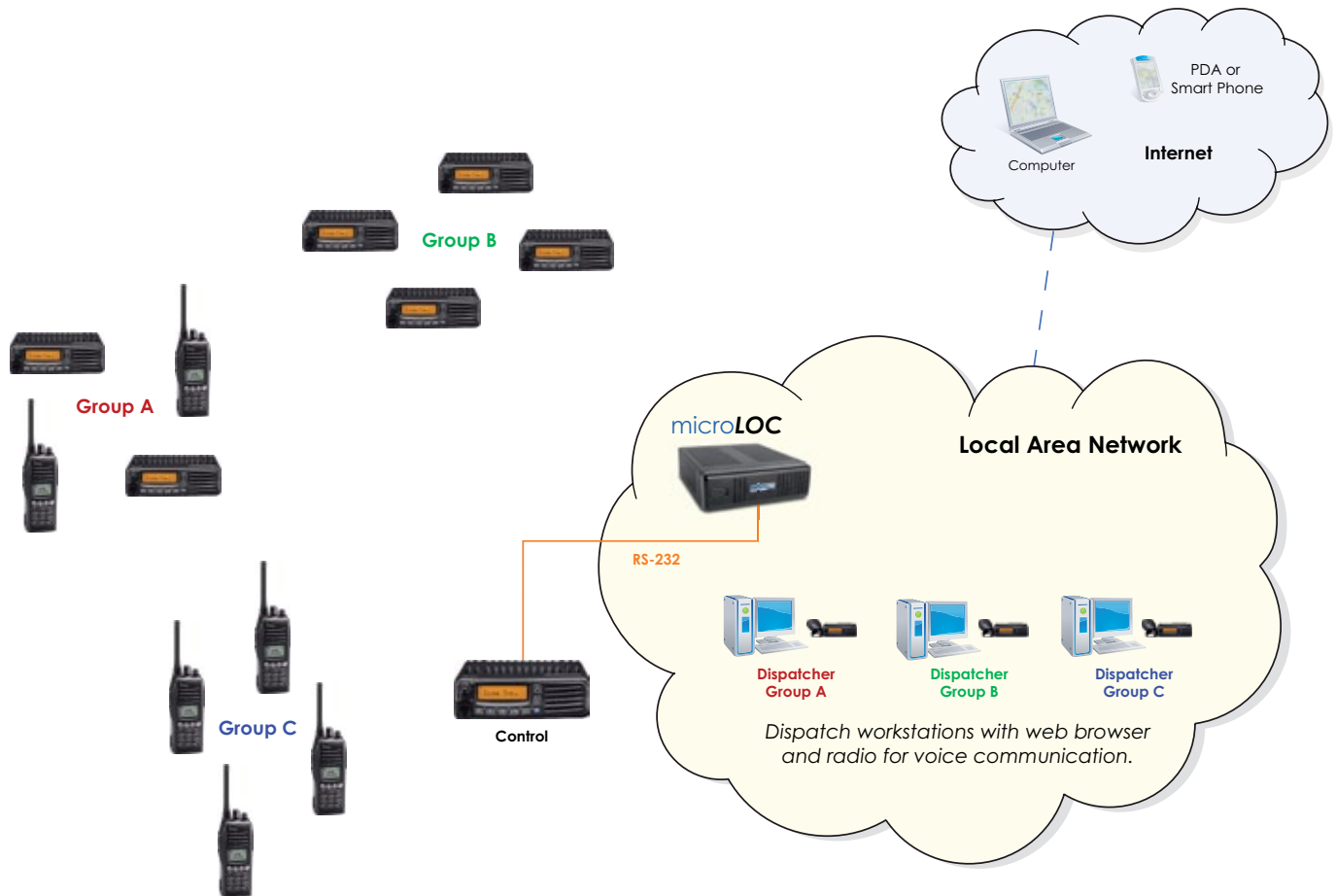
### Virtual Private Tracking – Multiple User Groups

microLOC can have up to 20 users (dispatchers) using the microLOC simultaneously. Each subscriber can be assigned to either one distinct dispatcher or to multiple dispatchers. This enables the system to be used by multiple user groups where each dispatcher can only 'see' those subscribers that have been assigned to them.

# System Overview

microLOC with iDAS radios

hermes



## Features

### Multi User Access and Remote Facility

Multiple users can access the system simultaneously from local or remote locations through an intranet/ internet connected PC and standard Internet browser.

### Flexible Mapping Engine

microLOC enterprise has a new flexible mapping engine which provides the option of choosing OpenStreetMap or Google™ Earth.

### User-friendly interface

microLOC is very simple to use. Just click and use the tremendous dispatching power that this product brings to your customers organization.

### Geo-Fencing

Enables a dispatcher to 'ring-fence' the geographical area a subscriber (or group of subscribers) is able to travel around and warn the dispatcher if the demarcation line of the geo-fence is crossed.

### Job dispatching and Emergency Email

There are various tools to assist the dispatcher in the coordination of a fleet. These are for example registration service, which provides an immediate overview of the status of each member of the fleet (color coded) and emergency indication via email.

### Customized Map Import

Any customer raster or vectorial tab format maps can be easily imported throughout a simple web based interface.

### Recording and Playback (Sawdust trail)

Built in record/playback capability to re-play GPS location data for the radios being tracked.

### No monthly recurring investment costs (opex)

With microLOC, there are no costs associated with software, map licenses (when using OpenStreetMaps) or monthly recurring fees.

## Technical Data

- Compatible with operating systems like Windows 7, Vista, XP, OSX, ipad and Linux
- Scalable architecture with up to 250 radios per unit
- Designed for 24/7 operation
- Multiple language selection
- Intel® Atom™ processor 1,6GHz
- Ethernet RJ45 and RS232 Interfaces
- 12V Power Supply (110/220V optional)
- Vesa, DIN-Rail and Wall Mount options
- Compact dimensions (WxHxD): 192 x 62 x 210mm