

VP890/54

Vertical Flat Panel Antenna, 60 deg, 14.5 dBi

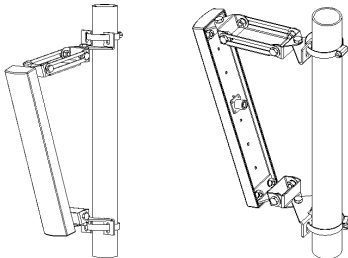
Specifications

Type	directional panel antenna
Polarization	vertical
Frequency	5470-5875 MHz
Impedance	50 ohm
VSWR	<1.7:1
Gain	14.5 dBi
HPBW	azimuth 90° elevation 10°
Connector	N female on rear (90 deg angle adapter included)
Power handling	20 W
Mount	bracket for wall or 35-50 mm mast incl stainless hose clamp
Size	W 67 mm H 355 mm D 90 mm (incl mount)
Weight	710 g net, 790 g shipping
Material	reflector - aluminium radome - ABS
Color	white
Other	DC grounded mount adjustable in azimuth $\pm 45^\circ$

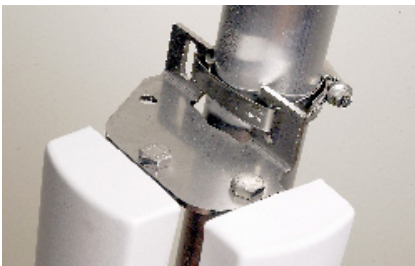
Smarteq reserves the right to change specifications without prior notice.



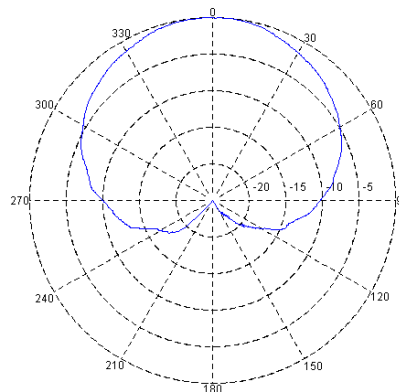
Accessories:



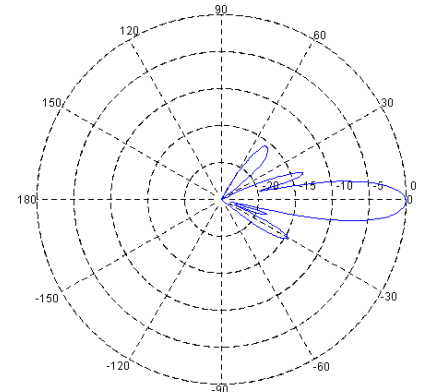
Compact tilt mount for VP890/54



Mount bracket for 2 x VP890/54 at 60° or 90°



Azimuth (H-field) radiation pattern



Elevation (E-field) radiation pattern

SMARTEQ™
WIRELESS TELECOM

Smarteq Wireless AB

P.O. Box 4064 | SE-182 04 Enebyberg | Sweden

www.smarteq.com

Smarteq's business concept is to use the latest technology to develop products in the field of wireless telecommunications. The business is focused on the development and sale of products for the end market and the OEM market.