

Szélessávú, nagy nyereségű, irányított antenna, 790 - 2700 MHz
High-gain, broadband, directional antenna, 790 - 2700 MHz

Specifikációk/Specifications

Elektromos paraméterek / Electrical data

Nyereség: 790 - 960 MHz max. 11.5 dBi
Gain: 1710 - 2185 MHz max. 11.0 dBi
2500 - 2700 MHz max. 12.0 dBi

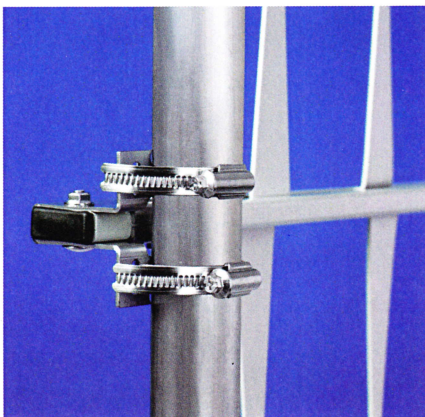
Frekvencia sávok: 790 - 960 MHz
Frequency bands: 1710 - 2185 MHz
2500 - 2700 MHz

VSZR: < 2.0:1
Teljesítmény/ Power: 10W
Impedancia/ Impedance: 50 Ω
Konnektor/ Connector: SMA female / male
Polarizáció/ Polarisation: Vertikális / Vertical
Irányítottság/ Directivity: 60°
E/H viszony/ F/B ratio: >15dB

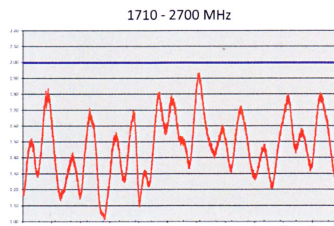
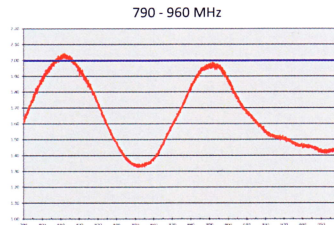
Mechanikai adatok / Mechanical data

Alapanyag/Material: Ötvözött alumínium
Aluminium alloy
Tartó bilincs/Clamp: Korrozíóálló acél
Stainless steel
Kábel/ Cable: RG 223
Műanyag alkatrészek/ Plastic Parts: ABS, Polycarbonate
Árbc átmérő/ Diameter mast: 30 - 60 mm
Méretek/ Dimension: 200 x 1000 x 50

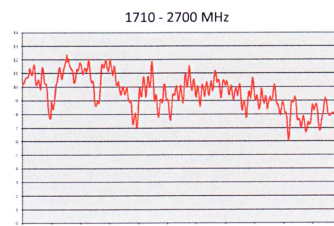
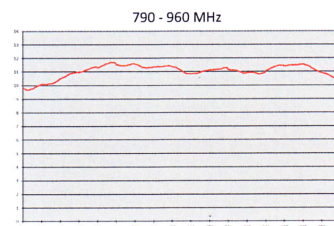
Tesztelve: IEC68-2-1:Ab/Ad
IEC68-2-2:Bb/Bd
IEC68-2-14:Na
IEC68-2-56:Cb
IEC68-2-11:Ka



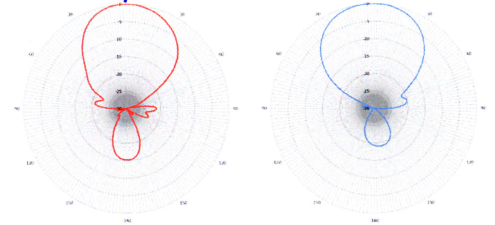
VSZR



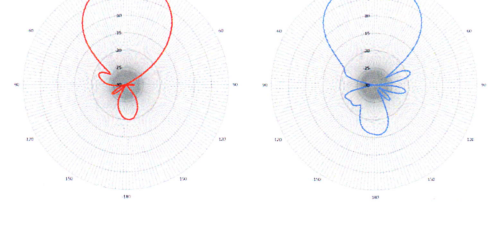
Antenna Gain



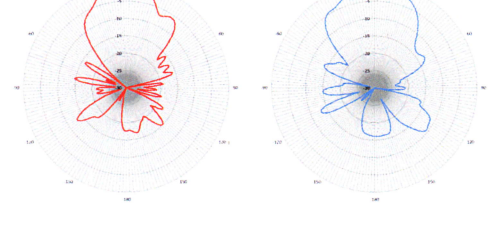
800 MHz E / H



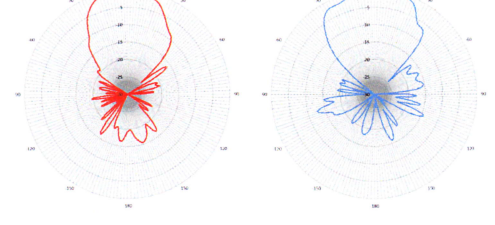
900 MHz E / H



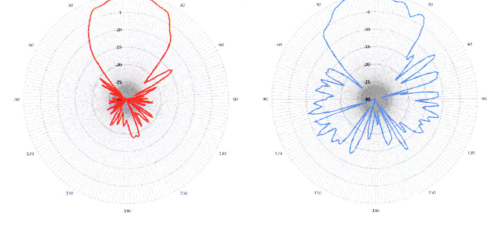
1800 MHz E / H



2100 MHz E / H



2500 MHz E / H



CARANT fenntartja a mindenemű változtatás jogát, akár előzetes bejelentés nélkül.
CARANT We reserve the right to make changes.