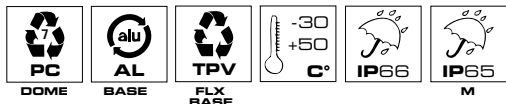


CRYSTAL JUNIOR



IP69K

CRYSTAL JUNIOR R B
CRYSTAL JUNIOR F B
BASE ISO B1 (base piana)
ISO B1 BASE (flat base)
BASE ISO B1 (base plate)



CRYSTAL JUNIOR R		CRYSTAL JUNIOR F	
V DC	12 ÷ 24	V DC	12 ÷ 24
A	0,7, 0,3	A	2,3, 1,0

Intensità luminosa secondo ECE R65

Light intensity according to ECE R65

Intensité lumineuse conforme à la norme ECE R65

Disponibile anche / Also available / Disponible aussi

CRYSTAL JUNIOR R A
CRYSTAL JUNIOR F A
BASE ISO A (fissaggio su spinotto)
ISO A BASE (mount on adapter socket)
BASE ISO A (emboîtement sur prises de connexion)

CRYSTAL JUNIOR R FLX
CRYSTAL JUNIOR F FLX
BASE FLESSIBILE ISO A (fissaggio su spinotto)
FLEXIBLE ISO A BASE (mount on adapter socket)
BASE FLEXIBLE ISO A (emboîtement sur prises de connexion)

CRYSTAL JUNIOR R P
CRYSTAL JUNIOR F P
BASE ISO C (fissaggio tramite bullone singolo M12)
ISO C BASE (M12 single bolt fixing base)
BASE ISO C (par boulon simple M12)

CRYSTAL JUNIOR R M
CRYSTAL JUNIOR F M
(Base magnetica, cavo spiralato e spina accendi-sigari)
(Magnetic base, helix cable and cigarette lighter plug)
(Base magnétique, câble spiralé et fiche pour allume-cigare)

Codici / Codes

CRYSTAL JUNIOR R
EFFETTO ROTANTE
ROTATING EFFECT
EFFET TOURNANT

12/24V

B (ISO B)	36843
A (ISO A)	36842
FLX (ISO A)	36844
P (ISO C)	36845
M SAC	36846

CRYSTAL JUNIOR F
EFFETTO FLASH
FLASHING EFFECT
EFFET FLASH

12/24V

36848
36847
36849
36850
36851

Luci di segnalazione omologate, sviluppate con tecnologia LED. Sono disponibili con effetto rotante **CRYSTAL JUNIOR R** o con effetto flash **CRYSTAL JUNIOR F**. **CRYSTAL JUNIOR R** e **CRYSTAL JUNIOR F** sono state progettate per sincronizzare più segnalatori (versioni con base ISO B1 e P) accesi contemporaneamente.

Tensione operativa

12/24V DC +/-10%

Caratteristiche meccaniche

Cupola in policarbonato infrangibile e base in alluminio ad elevata resistenza agli impatti **CRYSTAL JUNIOR R - F B, A, P**: base secondo ISO 4148, tipo B1 | tipo A | tipo C

CRYSTAL JUNIOR R - F M: base magnetica con cavo spiralato e spina accendisigari

CRYSTAL JUNIOR R - F FLX: base flessibile (secondo ISO 4148, tipo A) con terminale in gomma termoplastica resistente alle vibrazioni e agli shock

Caratteristiche luminose

Gruppo ottico costituito da 8 LED che garantiscono un effetto rotante (**CRYSTAL JUNIOR R**) o flash (**CRYSTAL JUNIOR F**) ad elevata intensità

Certificazioni / Certifications



ECE R65 TA1 E3
EMC UNECE 10R

CRYSTAL JUNIOR R

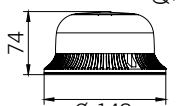
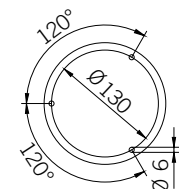
007296
E3 051289 (12/24V)

CRYSTAL JUNIOR F

007299
E3 051288 (12/24V)



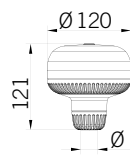
CLASSE 3
CLASS 3
CLASSE 3



CRYSTAL JUNIOR R B
CRYSTAL JUNIOR F B



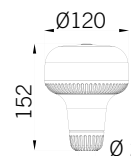
0,39



CRYSTAL JUNIOR R A
CRYSTAL JUNIOR F A



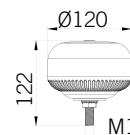
0,53



CRYSTAL JUNIOR FLX
CRYSTAL JUNIOR FLX



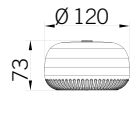
0,61



CRYSTAL JUNIOR R P
CRYSTAL JUNIOR F P



0,50



CRYSTAL JUNIOR R M
CRYSTAL JUNIOR F M



0,73



Approved beacons developed with LED light source. Available with rotating **CRYSTAL JUNIOR R** or flashing effect **CRYSTAL JUNIOR F**.

CRYSTAL JUNIOR R and **CRYSTAL JUNIOR F** have been engineered to synchronize more devices (ISO B1 and P base version) switched on simultaneously.

Voltages

12/24V DC +/-10%

Mechanical features

Unbreakable polycarbonate dome and aluminium base allowing high impact resistance

CRYSTAL JUNIOR R - F B, A, P: base according to ISO 4148, standard form B1 | form A | form C

CRYSTAL JUNIOR R - F M: magnetic base, helix cable and cigarette lighter plug

CRYSTAL JUNIOR R - F FLX: flexible thermoplastic base (according to ISO 4148, form A) especially resistant to vibrations and shocks

Optical features

Optical group made up of 8 LEDs allowing a high intensity rotating (**CRYSTAL JUNIOR R**) or flashing effect (**CRYSTAL JUNIOR F**).



Feux de signalisation homologués, développés avec source lumineuse LED. Les feux sont disponibles avec un effet tournant **CRYSTAL JUNIOR R** ou flash **CRYSTAL JUNIOR F**.

CRYSTAL JUNIOR R et **CRYSTAL JUNIOR F** permettent la synchronisation de plusieurs dispositifs avec base de fixation 3 points (ISO B1) ou fixation par boulon M12 (P) exclusivement.

Tension d'alimentation

12/24V DC +/-10%

Caractéristiques mécaniques

Dôme en polycarbonate incassable et base en aluminium résistant aux chocs

CRYSTAL JUNIOR R - F B, A, P: base en aluminium selon la norme ISO 4148, forme B1 | forme A | forme C

CRYSTAL JUNIOR R - F M: base magnétique, câble spiralé et fiche pour allume-cigare

CRYSTAL JUNIOR R - F FLX: base flexible (selon la norme ISO 4148, forme A) en élastomère résistante aux vibrations et aux chocs

Caractéristiques optiques

Groupe optique constitué par 8 LED qui permettent un effet tournant (**CRYSTAL JUNIOR R**) ou flash (**CRYSTAL JUNIOR F**) à haute intensité.