

POWERVERTER PVPWp

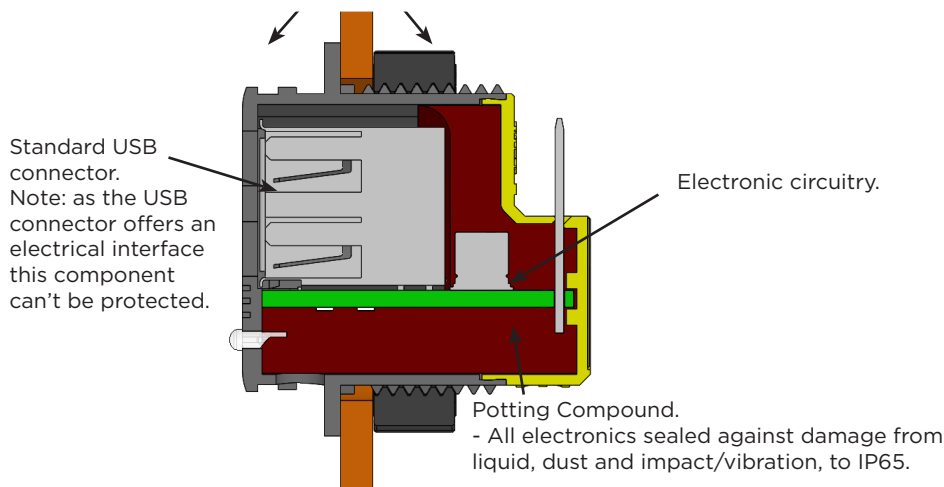
12/24VDC USB CHARGERS IP65 PROTECTED

SLIMLINE USB POWER WITH ADDED LIQUID & DUST INGRESS PROTECTION TO IP65

The PVPWp range of USB chargers offers all the performance benefits of the PVPro range with additional protection provided to the electronic circuit of the unit. A durable polyurethane compound encompasses the electronic components offering comprehensive protection against dust and liquid ingress to IP65.

This product offers a good solution where tampering might be an issue or in dirty or more challenging environments. Although the nature of the USB connector itself can always be wilfully broken or damaged and will still corrode if repeatedly exposed to liquid ingress, all electronics in these units are protected to IP65.

No airflow is possible between fore and rear of the unit.



THE RANGE

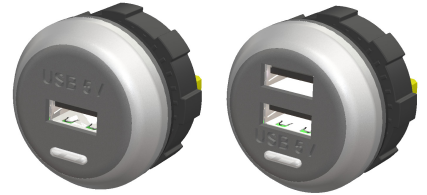
The range mirrors the very successful PVPro products, offering both single and double outputs and rear fit as well as front fitting options which allow the unit to be replaced quickly and easily should this be required. Automatic short circuit protection is also included, so in the event of tampering or compromise, the unit will automatically shut down, then re-start once the fault has been removed. All units can be installed on both 12Vdc or 24Vdc vehicles without adjustment.

Units can be installed directly into bulkheads, vehicle walls, into seat fittings and underneath seats using the mounting pod P/N USB-POD. They can also be fitted onto table tops using the horizontal surface mounting pod P/N USB-TPOD.

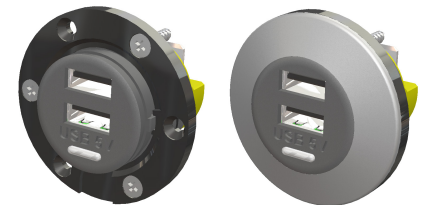
APPROVALS AND MANUFACTURE

The range has been designed to meet the rigorous standards required for on board commercial vehicle applications including EN50498, ISO7637-2, and is both CE and E marked (Reg10). The casings are made from V0 rated (self-extinguishing) high impact polycarbonate and the electronic assembly is predominantly by computer controlled SMT for maximum durability.

- Designed for demanding environments.
- Electronics protected to IP65.
- Approved to EN50498 and ISO7637-2. E marked (Reg10) and CE marked.



PowerVerter PVPWp-S and PVPWp-D single and double outlets.



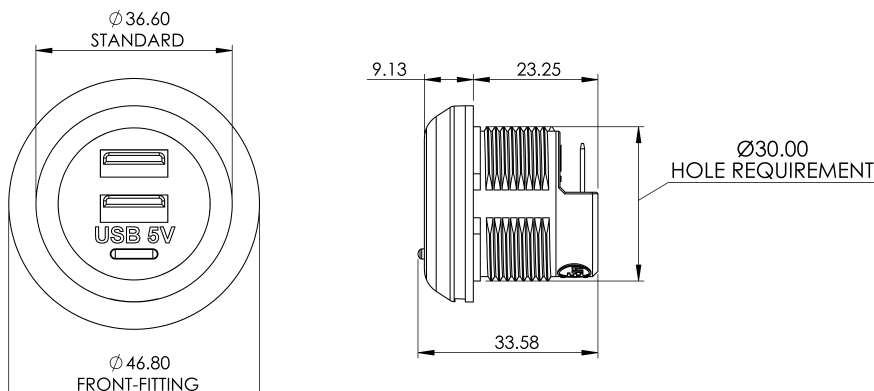
The Front facing version can be screwed in place from the front, then covered with the attractive ring to avoid tampering. Available in both single (PVPWp-SFf) and double outputs (PVPWp-DFf).



It is recommended that these units are fused individually with a 1Amp fuse (24V systems) or a 2Amp fuse (12V Systems). Suitable in-line fuses are available;
Part Numbers:
PVP-FUSE 1, PVP-FUSE 2

WARRANTY

The PVPWp range of chargers are manufactured using rugged components to provide years of service in demanding commercial environments and are covered by a three year return to base guarantee.



CHOOSE YOUR PVPWp PRODUCT

| Part Number | Description | Dimensions (mm) | Weight |
|-------------|---|-------------------------------|--------|
| PVPWp-S | Single output 12/24-5V USB Charger 2.1A | Ø37 x 33; Hole Ø30 | 21g |
| PVPWp-D | Double output 12/24-5V USB Charger 3.0A (1.5A per socket) | Ø37 x 33; Hole Ø30 | 25g |
| PVPWp-SFf | Single output 12/24-5V USB 2.1A Front fitting | Ø47 x 33; Hole Ø30 | 24g |
| PVPWp-DFf | Double output 12/24-5V USB Charger 3.0A Front fitting | Ø47 x 33; Hole Ø30 | 28g |
| USB-POD | Under-seat mounting pod for USB Chargers | Width 60; Height 52; Depth 80 | 55g |
| USB-TPOD | Table mounting pod for USB Chargers | 100 x 88 x 44 | 62g |
| PV-USB-H1 | Standard 1.2m wiring with in-line 2A fuse | 1 x Red 1.2m, 1 x Black 1.2m | 50g |

TECHNICAL DATA

| | |
|--------------------------------------|--|
| Input voltage range | 9-32Vdc |
| Output voltage | 5Vdc +/- 0.2V |
| Output Power | 2.1A (single), 3.0A (double) - max 1.5A per socket |
| Application | Charges all USB devices including Apple and Android |
| Transient voltage protection | Meets ISO7637-2 International standard for 12/24V vehicles |
| Output noise | <50mV pk-pk |
| Off load current (quiescent current) | <1.7mA |
| Power conversion efficiency | 90% |
| Operating temperature | -25°C to +55°C to meet this specification table |
| Storage temperature | -25°C to +100°C |
| Operating humidity | 95% max., non-condensing |
| Casework | Dark grey polycarbonate body |
| Connections | Input: 6.3mm push-in flat blade connectors Output: USB type 'A' single/double socket - tested to 10,000 mating cycles |
| Output indicator | Blue LED output indication |
| Mounting method | 30mm diameter hole with or without bezel |
| Safe area protection: | Over Current Limited by current sensing circuit Over heat Limited by temperature sensing circuit Overvoltage and Undervoltage Limited by sensing circuit Reverse Polarity Limited by sensing circuit Transients Protected by filters and rugged component selection Catastrophic protection Internal fuse |
| Approvals | 2014/30/EU The general EMC directive Regulation 10 The automotive directive 93/68/EEC The CE marking directive |
| Designed to | EN50498, ISO 7637-2 & R118 |
| Markings | CE and E marked |
| IP Rating: | IP65 (Not USB connector) |