

This guide describes about the preparation, operation mode, connection, setting screen and IP address setting. Read **“PRECAUTIONS”** first if you have not read it.

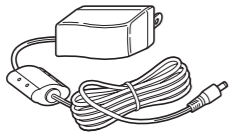
Step1: Installation guide ①

Step2: Installation guide ②

1. Preparation

Accessories

- AC adapter



This installation guide describes the VE-PG2 operating mode (Bridge mode and Selective call mode), and the sample connection settings. Read **“Installation guide ②”** for the sample connection setting details.

Download the VE-PG2 instruction manual from Icom web site (<http://www.icom.co.jp/world/>), if necessary.

Options

CAUTION: Use only the specified cable to connect a transceiver or repeater to the VE-PG2. Using another cable, like an Ethernet cable may damage the VE-PG2, transceivers or repeaters.

OPC-2073

Connection cable (For the transceiver)



OPC-2074

Connection cable (For the repeater)



2. Transceiver and repeater settings

Usable transceivers and repeaters

The following transceivers and repeaters are usable with the VE-PG2. The optional connection cable is required, refer to the following table.

Model name	Optional connection cable
IC-F121S/IC-F221S	OPC-2073 (approximately 5 m; 16.4 ft)
IC-F121/IC-F221	
IC-F111S/IC-F211S	
IC-F111/IC-F211	
IC-FR5000/IC-FR6000	OPC-2074 (approximately 5 m; 16.4 ft)

Set the transceiver and repeater as shown in the following table before connecting to the VE-PG2.

Setting items	Transceiver	Repeater
Channel	any	any
Audio volume level	Set the volume to the 12 o'clock position	any
External I/O (D-sub 25) port setting* ¹	–	Ext. I/O 18 Output Low Voltage 2
Required optional connection cable* ²	OPC-2073	OPC-2074

*¹The CS-FR5000 CLONING SOFTWARE and OPC-1122U CLONING CABLE are required when you set External I/O D-sub 25 port setting.

*²Use the specified connection cable when connecting the transceiver or repeater to the VE-PG2.

3. Operation mode

The VE-PG2 has two operating modes, **“Bridge mode (default)”** and **“Selective call mode.”**

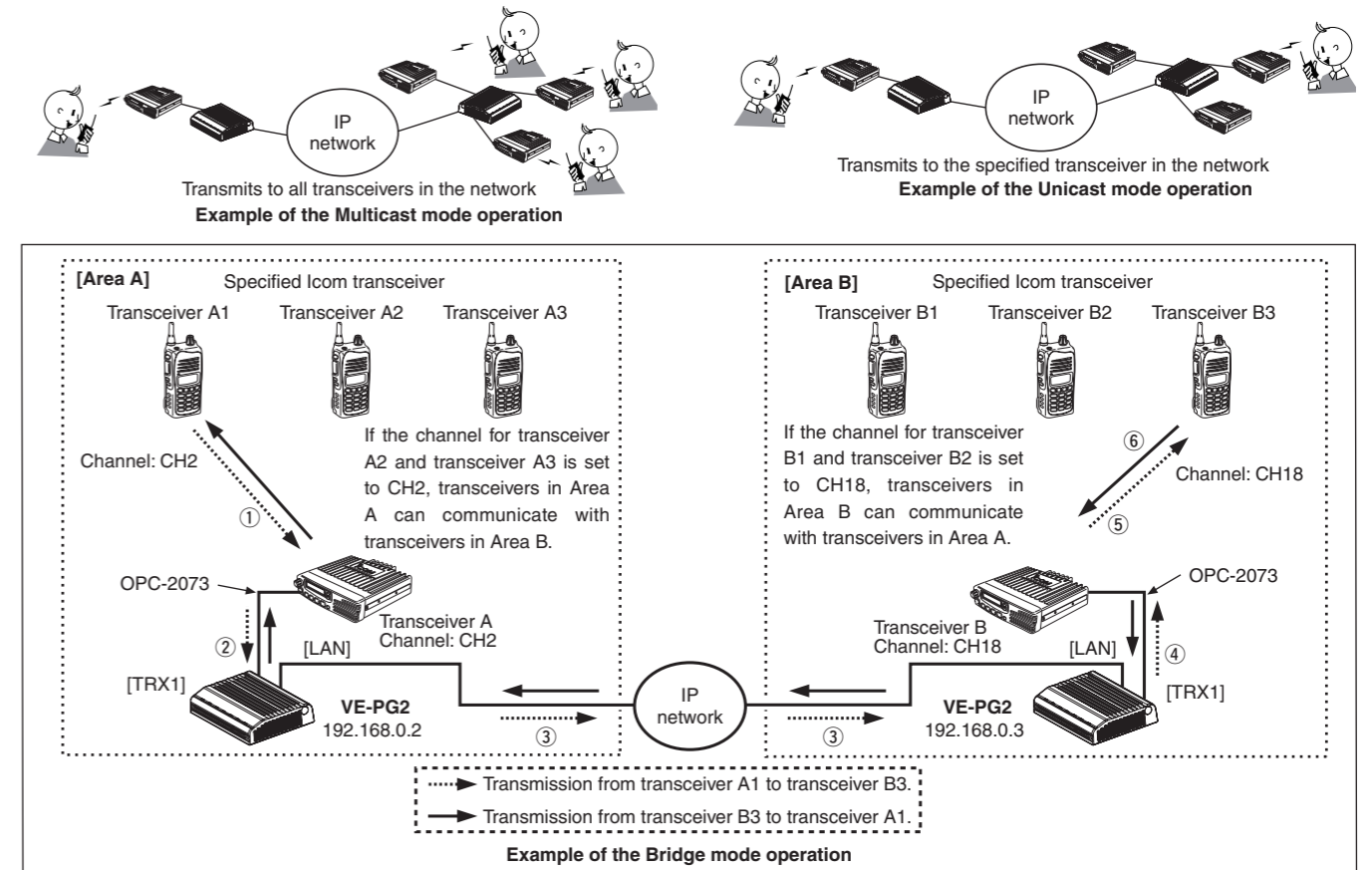
- The transceiver connected to the VE-PG2 and transceiver to be called must be set to the same channel.

The VE-PG2s can be transmitted signals to the transceivers through the IP network.

In the Bridge mode has **“Multicast mode”** and **“Unicast mode”** operations.

- In the Multicast mode, the VE-PG2 calls all transceivers that are connected to the VE-PG2 (default).
- In the Unicast mode, the VE-PG2 calls a specified transceiver that is connected to the VE-PG2.

Bridge mode operation

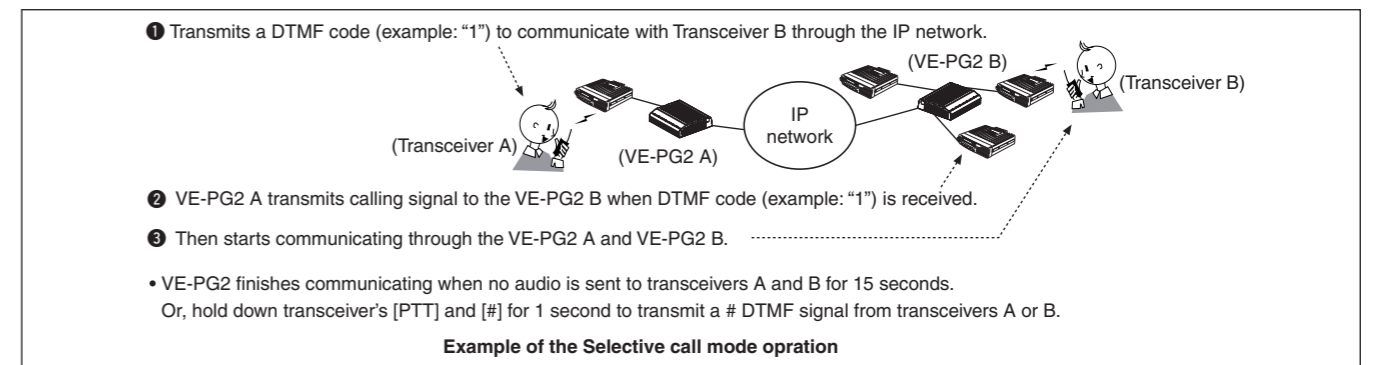


Example of the Bridge mode operation: Calling a transceiver in another area (Transceiver A1 calls Transceiver B3).

- Set Transceiver A1's channel to CH2, and while holding down [PTT], speak into the microphone at your normal voice level to call Transceiver B3.
- When Transceiver A receives the AF signal from Transceiver A1, Transceiver A sends the AF signal to the VE-PG2 through the OPC-2073.
- The VE-PG2 ([Area A]) converts the AF signal to an RoIP signal, then transmits it from the [LAN] port to the VE-PG2 ([Area B]) through the IP network.
- The VE-PG2 ([Area B]) converts the RoIP signal to an AF signal, then Transceiver B receives the signal.
- Transceiver B3 receives the signal from Transceiver B.
- Transceiver B3 can also transmit a signal to communicate with Transceiver A1.

Selective call mode operation

The DTMF tone code can be used for calling the specified station or controlling the external equipment in the Selective call mode.

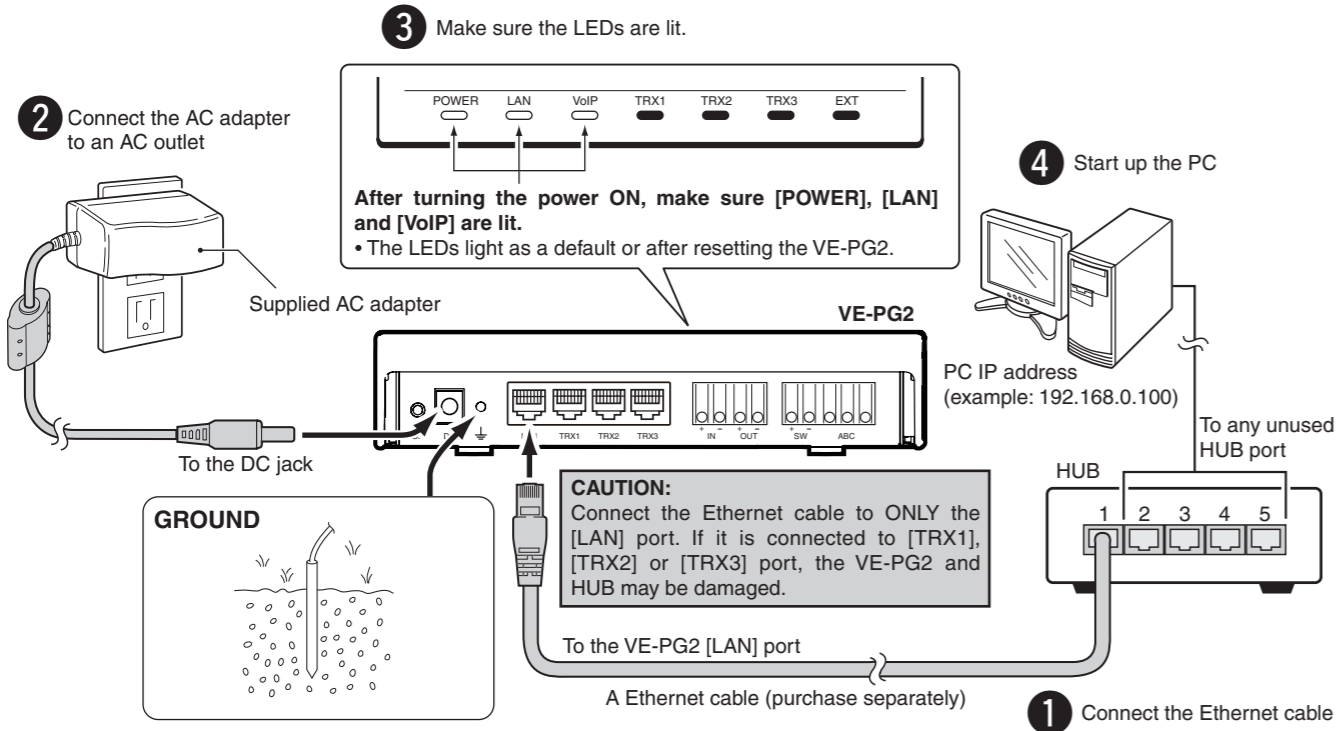


4. Connection

Connect the Ethernet cable, HUB, the ground cable and AC adapter to the VE-PG2 by following steps ❶ to ❹ as shown below.

(Connect the AC adapter with the VE-PG2 after connecting the Ethernet cable.)

- Disconnect the HUB from the established network before connecting the Ethernet cable, only if the VE-PG2 is in the default mode.
- The VE-PG2 can be connected directly to the PC using the MDI-X (crossover) type Ethernet cable.



⚠ WARNING!

To prevent electrical shock, television interference (TVI), broadcast interference (BCI) and other problems, ground the VE-PG2 through the ground terminal.

For best results, connect a heavy gauge wire or strap to a ground terminal of an AC outlet or a long ground rod. Make the distance between the ground terminal and ground as short as possible.

NEVER connect the ground terminal to a gas or electric pipe. This may result in an electrical shock or cause a fire.

Network and System default settings

Network setting	IP address	192.168.0.1*
	Subnet mask	255.255.255.0*
System setting	Administrator ID	admin (Fixed)
	Administrator password	wavemaster*

To set the VE-PG2 to the default setting, see “Precautions” for details.

*User settable.

Setting the PC IP address

Set the static PC IP address (example: 192.168.0.100)
See the instruction manual which comes with the PC for details on setting the PC IP address.
When you set the static VE-PG2 IP address, assign the IP address by network administrator.

5. Accessing the VE-PG2 setting screen

Accessing the VE-PG2 setting screen

The following procedure describes how to access the VE-PG2 setting screen from a web browser on the PC.

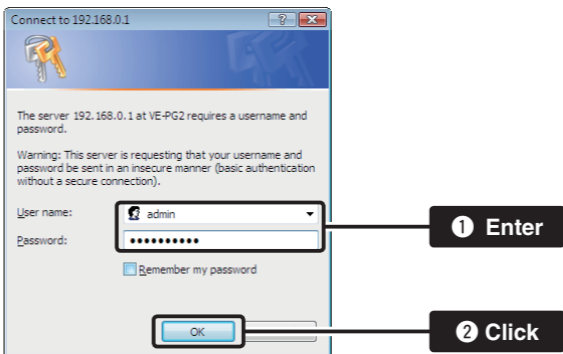
- ❶ Open a web browser, and then enter the VE-PG2 IP address in the address bar.



The factory default IP address setting is shown as an example.

- ❷ Push [Enter]. The login authentication window will open.

- ❸ Enter “admin” (default user name) and “wavemaster” (default password) in their respective input field, and then click [OK] to display the VE-PG2 setting screen.



About web browsers

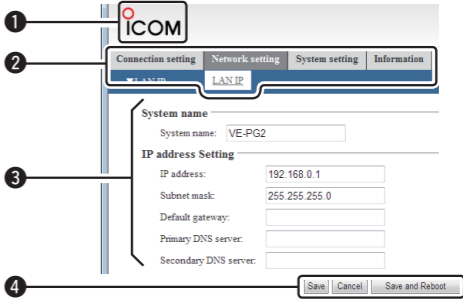
Only Microsoft Internet Explorer 8 or later should be used with the VE-PG2.

Activate the JavaScript and set to allow Cookies on your web browser to display the setting screen correctly.

If other browsers are used, the screen may not be displayed correctly.

Setting screen descriptions

See the instruction manual (PDF file: Download from the Icom web site) for details of the setting screen.



❶ Link to Icom web site

Click the Icom logo to link to the Icom web site if your PC is connected to the Internet.

❷ Selects the setting screen

Displays the screen name list on a menu line. When you place the mouse pointer on each menu title, a list of items drops down which you can use to select the desired setting.

(Example: Place the mouse pointer on “Connection setting”, and then click “Operating mode” shown on the list.)

❸ Setting items and value display

Displays the setting and values when you click the screen name (example: Clicking “Operating mode” displays the setting screen).

❹ Setting buttons

Save or cancel setting values.

If “The setting which should be rebooted was changed.” is displayed on the screen when you click the [Save] button, click the [Save and Reboot] button.

The VE-PG2 reboots, and the setting items and values are updated.

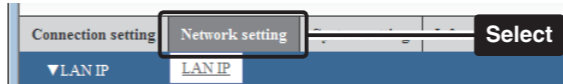
The following message is displayed on the screen while the VE-PG2 is rebooting.

VE-PG2 is rebooting.
Click [Back] after VE-PG2 has rebooted.

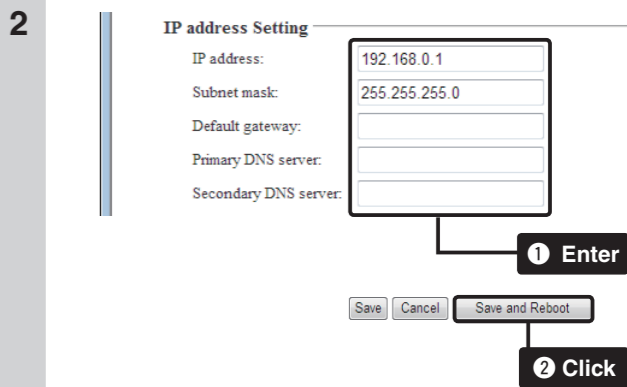
- The setting screen does not automatically return, so click [Back] about 30 seconds after the “VE-PG2 is rebooting” message appears.

6. VE-PG2 IP address setting

- ❶ Click “LAN IP” in the “Network setting” to display the “LAN IP” setting screen.



- ❷ Set the IP address and subnet mask of the VE-PG2. Be sure not to input the same IP address as another device's address.
When you update the firmware online, connect the VE-PG2 to the Internet and set the default gateway and DNS server addresses as the addresses used in the network.
When finished, click [Save and Reboot].



See “Installation guide ❷” for bridge and selective call mode setting examples.

Microsoft, Windows and Windows Vista are registered trademarks of Microsoft Corporation in the United States and/or other countries.

All other products or brands are registered trademarks or trademarks of their respective holders.

This product includes in GoAhead WebServer software of GoAhead Software Inc.

© 2002 GoAhead Software, Inc. All Rights Reserved.

Icom Inc.

1-1-32 Kamiminami, Hirano-ku, Osaka 547-0003, Japan

Count on us!

A-6838W-2US

Printed in Japan

© 2010 Icom Inc.